



Apartment

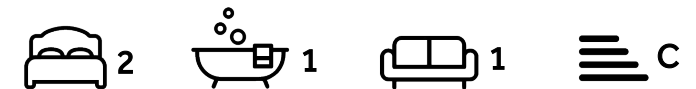
# Elsworthy Terrace London NW3 3DR

## £875 Per week

Council Tax Band: F

### FEATURES

- Prime Primrose Hill Location
- 2 Bedrooms
- Semi Open Plan Kitchen/Reception Room
- Family Bathroom
- Permit Parking
- High Ceilings



**ADN**  
RESIDENTIAL



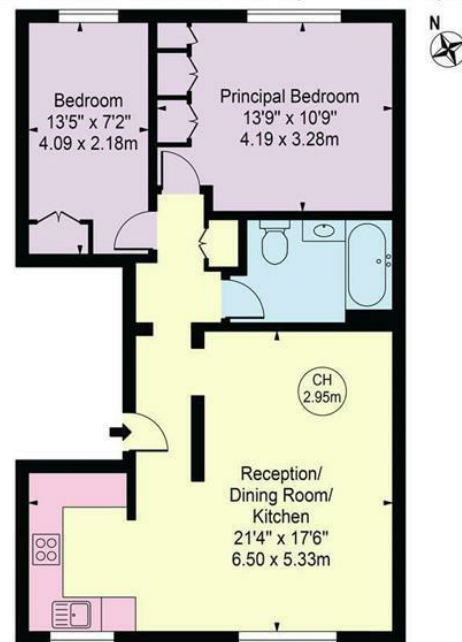


# 2 Bedroom Apartment located in London

A beautifully presented and bright two bedroom apartment arranged over the first floor of a handsome period property located on the doorstep of Primrose Hill Park. This charming property has been finished to a high standard and comprises, semi open plan kitchen/reception room, principal bedroom with built in storage, second bedroom and a family bathroom. Additional benefits include wooden flooring and high ceilings throughout. Elsworthy Terrace is ideally located 0.2m from the local amenities and restaurants that Regents Park Road has to offer.



Elsworthy Terrace  
Approx. Gross Internal Area 675 Sq Ft - 62.71 Sq M



First Floor

For Illustration Purposes Only - Not To Scale

This floor plan should be used as a general outline for guidance only and does not constitute in whole or in part an offer or contract. Any intending purchaser or lessee should satisfy themselves by inspection, searches, enquiries and full survey as to the correctness of each statement. Any areas, measurements or distances quoted are approximate and should not be used to value a property or be the basis of any sale or let. Copyright Morriant Photography & Design LTD

Energy Efficiency Rating		
	Current	Potential
Very energy efficient - lower running costs		
(92 plus) A		
(81-91) B		
(69-80) C	69	79
(55-68) D		
(39-54) E		
(21-38) F		
(1-20) G		
Not energy efficient - higher running costs		
England & Wales	EU Directive 2002/91/EC	

Call us on

**020 7407 5155**

[info@adnresidential.co.uk](mailto:info@adnresidential.co.uk)

[www.adnresidential.co.uk](http://www.adnresidential.co.uk)

**ADN**  
RESIDENTIAL

Agents Note: Whilst every care has been taken to prepare these particulars, they are for guidance purposes only. All measurements are approximate and are for general guidance purposes only and whilst every care has been taken to ensure their accuracy, they should not be relied upon and potential buyers are advised to recheck the measurements.